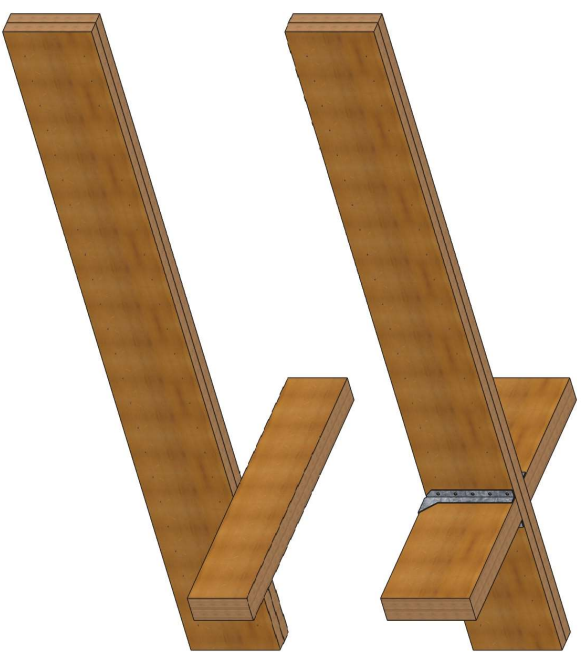
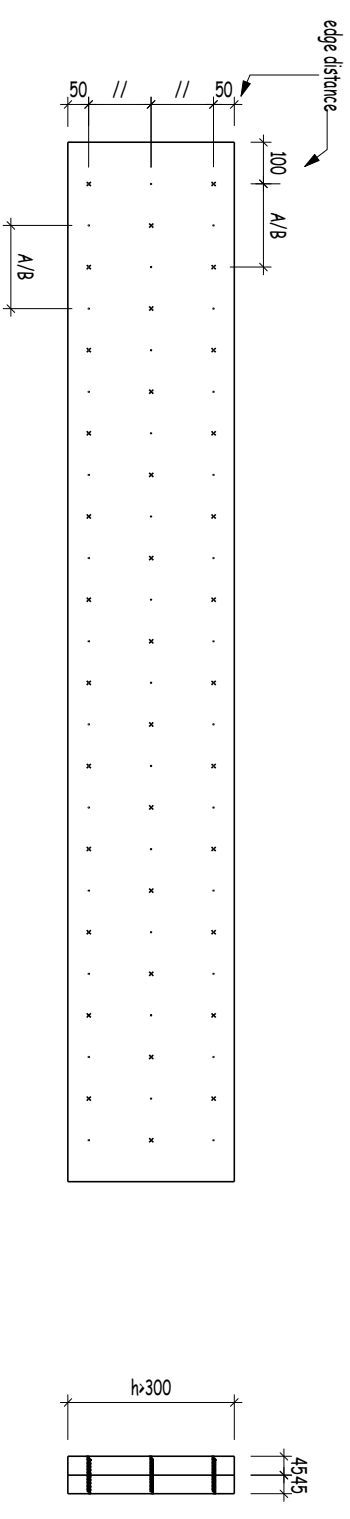
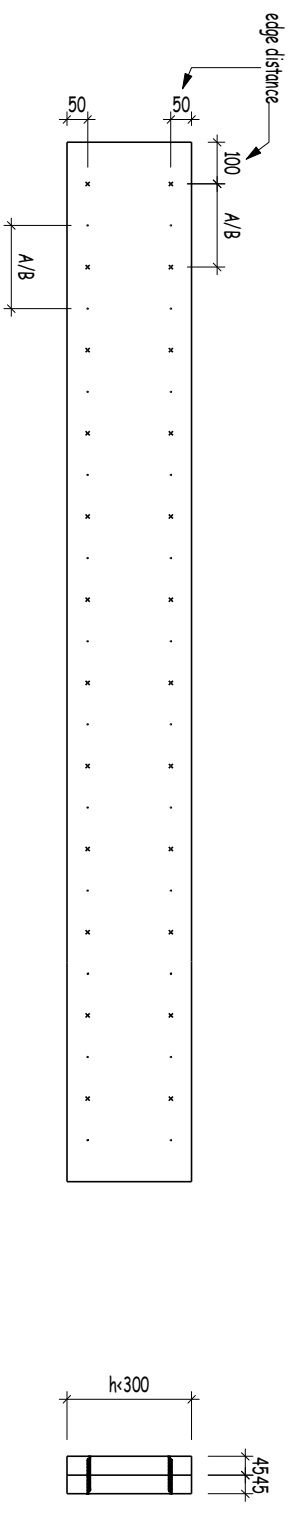


Nail Laminating or Screwing double sections of NelsonPine LVL together for residential use

Symmetrical Loading - either top loaded or loaded equally from both sides of the member



(fixing type)	centers	h < 300	h > 300
A - 3.15x90 nails	200 mm	2 rows staggered top and bottom	3 rows staggered top and bottom
B - 14Gx75 bugle head timber screws	300 mm	bottom from alternative sides	bottom from alternative sides



Asymmetrical loading - side loaded



fixing type	centers
C - 6 nails 3.15x90	50mm spacing across the grain
D - 3 wooden screws 3/14Gx75 bugle head	50mm spacing across the grain

